

Xenometrics, LLC, is a privately owned non-clinical contract laboratory.

Our areas of expertise are **Pharmacokinetics, Safety Pharmacology, Toxicological Testing** and **Discovery Support Services** designed to address pertinent pharmaceutical drug discovery and safety issues. As a company, we strongly believe that quality should never be compromised. Consequently, our experienced scientists are committed to providing reliable, dedicated testing and timely results. Regulatory agencies and Consumers are increasingly demanding more detailed information in order to minimize the potential of adverse events. Why not meet the challenges of drug discovery and create opportunities to differentiate your products using our range of synergistic options.

Our mission is to serve the Industry in its capacity of conducting high quality research. Our personnel, facilities and equipment are primed to meet your outsourcing needs. The breadth of companies we serve include Biotech, Pharmaceutical, Medical Device Research, Animal Health, and the Agrochemical Industry. We would be pleased to provide you with references upon request.

Metabolism Services

Concise investigation of drug metabolism is essential to the drug discovery process. The drug discovery services offered by Xenometrics are strategically selected to support candidate selection and regulatory mandates. All standard and many specialized routes of administration are offered.

Discovery Services

Our capabilities for drug discovery are varied and customized to suit your needs.

- Cost effective Non-GLP protocols available
- Candidate Screening
- In vivo multiple species pharmacokinetic screening approaches (NHP, Canine, Rodent, Rabbit and Other)
- Biliary excretion and enterohepatic cycling models to support metabolite profiling and identification (NHP, Canine, and Rodent)
- Surgery models (BDC, GI, and PV cannulations)
- Standard and some specialized routes of administration available

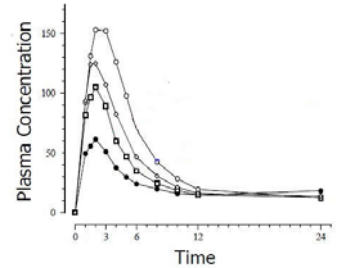


Pharmacokinetics

Development Services

ADME (Absorption, Distribution, Metabolism, and Elimination)

- Pharmacokinetics and Toxicokinetics
- Single or multiple dosing
- Radiolabeled and Non-radiolabeled Test Compounds
- Use of radio-isotopes (^{14}C , ^3H , ^{125}I)
- Mass Balance/Excretion (NHP, Canine and Rodent)
- Expired CO_2 collections (Mouse and Rat)
- CSF & Plasma collection – anesthetized (NHP, Canine and Rodent)
- Placental and lacteal transfer (Mouse and Rat)
- Tissue Distribution (NHP, Canine and Rodent)
- Portal vein cannulation (dog)
- PK/PD analysis
- Plasma kinetics (NHP, Canine, Rabbit, Rodent, other)
- WinNonlin 5.2



CONTACT INFORMATION

Xenometrics is conveniently located in the Midwest region, with easy access to Kansas City and only a 45 minute drive from Kansas City International Airport (MCI).



E-mail: ADME@XenometricsLLC.com
DrugDis@XenometricsLLC.com
Tox@XenometricsLLC.com
Pharma@XenometricsLLC.com

P.O. Box 401
17745 Metcalf Avenue
Stilwell, Kansas 66085 USA

Phone: 913-433-5427
Fax: 913-433-5690

www.XenometricsLLC.com